



## CL-MC-10G Media Converter

www.carelink.com.tw



### 10G MEDIA CONVERTER OVERVIEW

The high-performance **10G Media Converter** functions as a copper-to-fiber converter, a fiber mode converter, or a fiber repeater. Five interfaces of **10G Media Converter** series are available and supported: RJ45 to SFP+, SFP+ to SFP+, SFP+ to XFP, RJ45 to XFP, and CX4 to SFP+.

**10G Media Converter** provides a bi-directionally conversion between 10GBASE-R (fiber) and 10GBASE-T (copper). If the ISP administrator would like to deploy FTTX services from central office to the user's street or large organization building by fiber as the last mile connection, **10G Media Converter** could convert the media type from fiber to copper wire, and then distribute to any nearby location with 10Gbps Ethernet switch, or to xDSL modem via DSLAM.

### KEY ADVANTAGES:

- Fast connection with multi-function
- Provide reliable long-distance connection
- Wirespeed forwarding without bottleneck
- Simple and cost-effective conversion between 10Gbps Ethernet fiber and copper
- Optimized for testing 10Gbps fiber network
- Port supported: SFP+, RJ-45, XFP, and CX4 connector
- Small portable size case
- Plug and play without extra configuration
- Full IEEE 802.3ae compliant

### Features:

- Real-Time conversion between 10GBASE-T, 10GBASE-R, and 10GBASE-CX4
  - 10GBASE-T interface based on IEEE 802.3an
  - 10GBASE-R interface based on IEEE802.3ae
  - 10GBASE-CX4 interface based on IEEE 802.3ak
- Conversion of media type between fiber (SFP+, XFP) and twisted pair copper wire (RJ-45, CX4)
- Real-time LEDs that display running status
  - SFP+ status: Indicate the SFP+ fiber connector is connected or not
  - LR status: Indicate the LR Transceiver or SR transceiver is plugged or not
  - Link/Rx status: Display the Network linked/Receive status
  - SFP+/Rx status: Display the Network linked/Receive status (For 10G Media Converter-1 only)
  - Loopback status: Indicate the Loopback test status of A and B ports
  - SYS status: Indicate system operation status
- Console for updating firmware and configuring loopback functions
- Both SFP+ and RJ-45 port can connect to other 10Gbps Ethernet switch for expansion.
- Subsidiary device for test on 10Gbps Ethernet switch with 10GBASE-T and/or 10GBASE-R ports



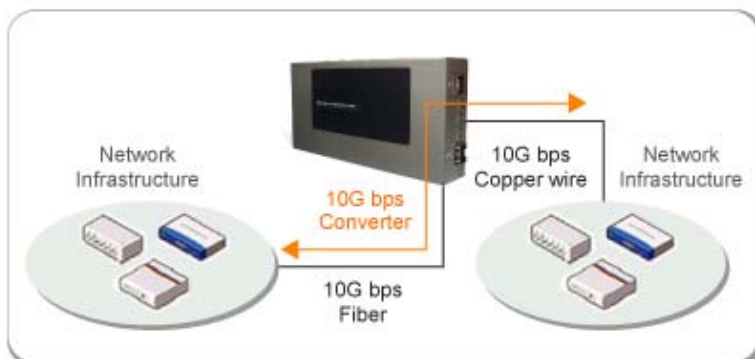
## CL-MC-10G Media Converter

[www.carelink.com.tw](http://www.carelink.com.tw)

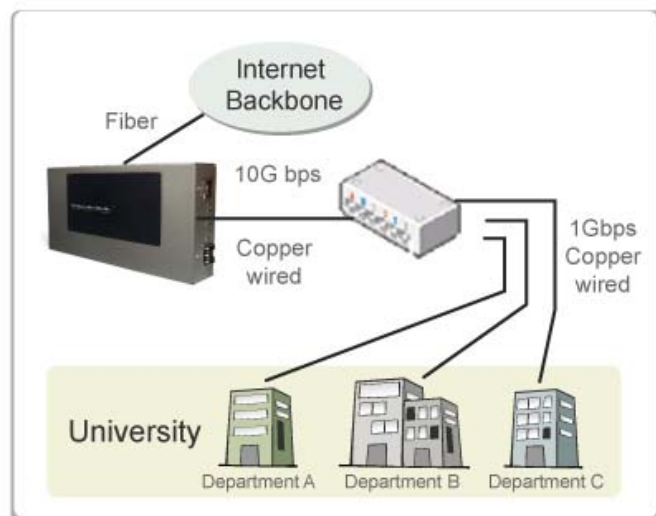
### Application:

- Media converter for network backbone
- Connection between fiber to copper or fiber to fiber 10Gbps Ethernet equipment
- Can be applied in Telecommunication room, R&D laboratory, Data center, and etc.

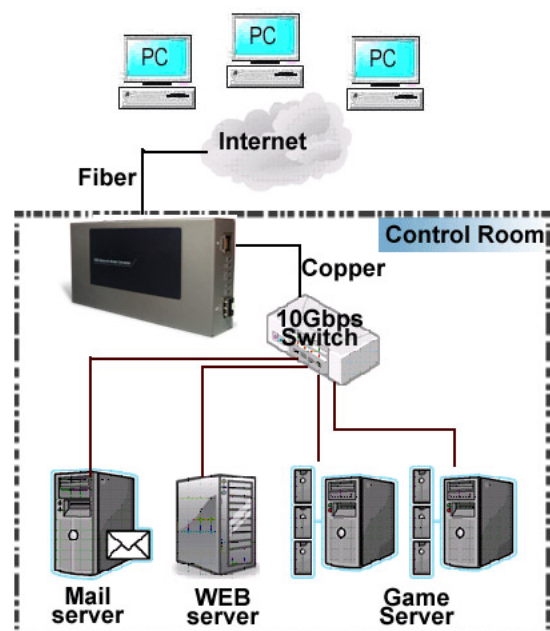
#### Solution 1 :



#### Solution 2 :



#### Solution 3 :











# CL-MC-10G Media Converter

www.carelink.com.tw

## 10G MEDIA CONVERTER SPECIFICATION

Models		10G Media Converter	10G Media Converter-1	10G Media Converter-2	10G Media Converter-3	10G Media Converter-4
Interface		RJ45 to/from SFP+	SFP+ to/from SFP+	SFP+ to/from XFP	RJ45 to/from XFP	CX4 to/from SFP+
Data Transfer Rate		10Gbps				
Connectivity		Wired				
Platform		PC				
Protocol	Port A	IEEE802.3an (10GBase-T)	IEEE802.3ae (10GBase-R)	IEEE802.3ae (10GBase-R)	IEEE802.3an (10GBase-T)	IEEE802.3ae (10GBase-CX4)
	Port B	IEEE802.3ae (10GBase-R)	IEEE802.3ae (10GBase-R)	IEEE802.3ae (10GBase-R)	IEEE802.3ae (10GBase-R)	IEEE802.3ae (10GBase-R)
Fixed Port		One 10Gbps UTP Port	Two 10Gbps SFP+ Port	One 10Gbps SFP+ Port	One 10Gbps UTP Port	One 10Gbps SFP+ Port
		One 10Gbps SFP+ Port		One 10Gbps XFP Port	One 10Gbps XFP Port	One 10Gbps CX4 Port
		One RS-232 Console Port	One RS-232 Console Port	One RS-232 Console Port	One RS-232 Console Port	One RS-232 Console Port
		One Power Jack	One Power Jack	One Power Jack	One Power Jack	One Power Jack
Maximum Packet Forwarding Rate (packet per second)		14,880,950				
Management Port		Serial Port				
LED Display		<ul style="list-style-type: none"> <li>• SFP+</li> <li>• Link/Rx A</li> <li>• Link/Rx B</li> </ul>	<ul style="list-style-type: none"> <li>• LR</li> <li>• Loopback</li> <li>• SYS</li> </ul>	<ul style="list-style-type: none"> <li>• LR A</li> <li>• LR B</li> <li>• SYS</li> </ul>	<ul style="list-style-type: none"> <li>• SFP+/Rx A</li> <li>• SFP+/Rx B</li> <li>• Loopback</li> </ul>	<ul style="list-style-type: none"> <li>• Link/Rx A</li> <li>• Link/Rx B</li> <li>• Loopback</li> <li>• SYS</li> </ul>
Plug & Play		Yes				
Standalone		Yes				
Connector Types	Port A	RJ-45	SFP+	SFP+	RJ-45	CX4
	Port B	SFP+	SFP+	XFP	XFP	SFP+
Dimensions		175 x85.9x32.6mm (L x W x H)				
Additional Features		Layer 1 loopback				
		UTP cable length detection			UTP cable length detection	

## Ordering Information:

P/N	CL-MC-SFP+	CL-MC-SFP+ 2	CL-MC-XFP-SFP+	CL-MC-XFP	CL-MC-CX4
Photo					
Interface	RJ45 to/from SFP+	SFP+ to/from SFP+	SFP+ to/from XFP	RJ45 to/from XFP	CX4 to/from SFP+
P/N	CL-MC-XFP 2				
Photo					
Interface	XFP to/from XFP				

